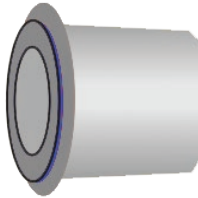


## Wiring Instructions

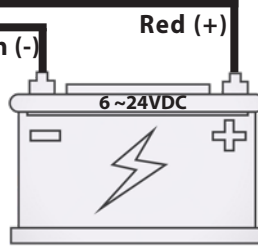


Dimmer Switch

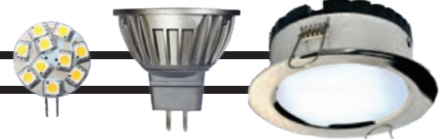


Black (-)  
Red (+)

Green (-) Red (+)



LED Blubs / LED downlights

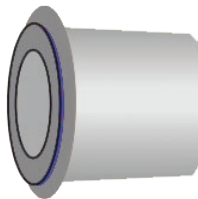


- Working voltage 6~24VDC.
- Maximum Switching current 7A
- Working temperature -20° to +70°
- Short press for ON-OFF
- Long press >3 Sec for stepless dimming

## Wiring Instructions

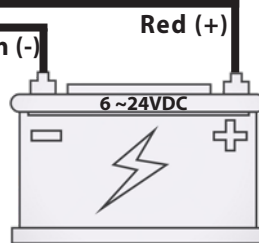


Dimmer Switch

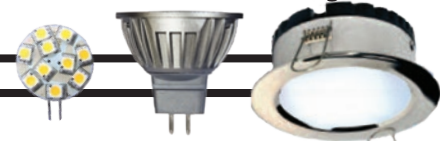


Black (-)  
Red (+)

Green (-) Red (+)



LED Blubs / LED downlights

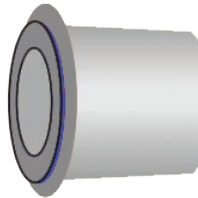


- Working voltage 6~24VDC.
- Maximum Switching current 7A
- Working temperature -20° to +70°
- Short press for ON-OFF
- Long press >3 Sec for stepless dimming

## Wiring Instructions

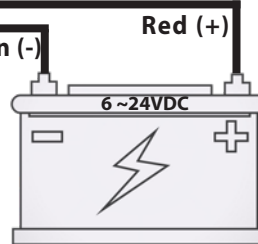


Dimmer Switch

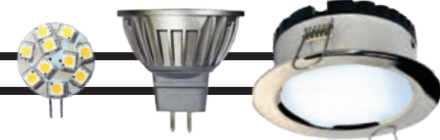


Black (-)  
Red (+)

Green (-) Red (+)



LED Blubs / LED downlights

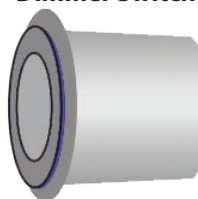


- Working voltage 6~24VDC.
- Maximum Switching current 7A
- Working temperature -20° to +70°
- Short press for ON-OFF
- Long press >3 Sec for stepless dimming

## Wiring Instructions

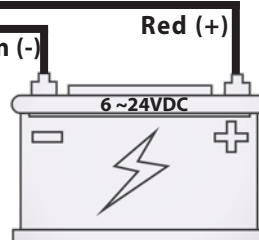


Dimmer Switch



Black (-)  
Red (+)

Green (-) Red (+)



LED Blubs / LED downlights



- Working voltage 6~24VDC.
- Maximum Switching current 7A
- Working temperature -20° to +70°
- Short press for ON-OFF
- Long press >3 Sec for stepless dimming